

**BALDOR® • RELIANCE** 

**Product Information Packet**

**XEFRPM36604**

**60HP, 1800, 460V, HL364T, TEFC, F1**

Part Detail							
Revision:	G	Status:	PRD/A	Change #:		Proprietary:	No
Type:	AC	Elec. Spec:	LS7022A	CD Diagram:	422927-001	Mfg Plant:	
Mech. Spec:		Layout:	619707-001	Poles:	04	Created Date:	06-03-2016
Base:		Eff. Date:	04-23-2019	Leads:			

Specs			
Catalog Number:	XEFRPM36604		
Enclosure:	TEFC		
Frame:	HL364T		
Frame Material:	Exposed Laminations		
Output @ Frequency:	60.000 HP @ 60 HZ		
Synchronous Speed @ Frequency:	1800 RPM @ 60 HZ		
Voltage @ Frequency:	460.0 V @ 60 HZ		
Agency Approvals:	CCSA US		
Auxillary Box:	No Auxillary Box		
Base Indicator:	Rigid		
Bearing Grease Type:	Polyrex EM (-20F +300F)		
Constant Torque Speed Range:	1-60		
Current @ Voltage:	60.000 A @ 460.0 V		
Duty Rating:	CONT		
Feedback Device:	NO FEEDBACK		
Frame Prefix:	HL		
Heater Indicator:	No Heater		
Insulation Class:	H		

<b>IP Rating:</b>	IP54		
<b>KVA Code:</b>	G		
<b>Mounting Arrangement:</b>	F1		
<b>Product Family:</b>	Fan - Centrifugal		
<b>Pulley End Bearing Type:</b>	Ball		
<b>Pulley Face Code:</b>	Standard		
<b>Shaft Ground Indicator:</b>	No Shaft Grounding		
<b>Shaft Rotation:</b>	Reversible		
<b>Motor Standards:</b>	NEMA		
<b>Thermal Device - Bearing:</b>	None		
<b>Thermal Device - Winding:</b>	Normally Closed Thermostat		

Nameplate 000613007QF												
	<b>DUTY</b>	<b>HP</b>	<b>RPM</b>	<b>AMPS</b>	<b>VOLTS</b>	<b>HZ</b>						
	CONT	60	1800	60	460	60						
<b>CAT.NO.</b>	XEFRPM36604			<b>SPEC. NO.</b>	H36-A000-0001							
<b>SER.NO.</b>				<b>FRAME SIZE</b>	HL364T		<b>TYPE PSM</b>					
<b>AMB.</b>	40	<b>S.F.</b>	1.15	<b>ENCL.</b>	TEFC	<b>PH</b>	3	<b>DESIGN</b>	B	<b>CODE</b>	G	
<b>NEMA NOM. EFF</b>	97			<b>GUARANTEED EFFICIENCY</b>			96.4		<b>POWER FACTOR</b>	98.6		
<b>D.E. BRG.</b>	75BC02J30X			<b>O.D.E. BRG.</b>			55BC02J30X		<b>INSUL. CLASS</b>			H
<b>VPWM INVERTER DUTY @1.0SF</b>	<b>CHP HZ</b>	60-90		<b>CT HZ</b>	1-60		<b>VT HZ</b>	0-60				
	XT											

Nameplate 000692000VY		
IS	<input type="text"/>	MEAS OPEN CIRCUIT VOLTAGE
		VOLTS AT <input type="text"/>
		RPM.
EXCEED	L.R. <input type="text"/>	MTR PH CURRENT SHOULD NOT
		AMPS RMS PEAK TO
	AVOID DEMAGNETIZATION	

Parts List		
Part Number	Description	Quantity
WS313101	WS H36-A000-0001	1.000 EA
RA309330	RA H36-A000-0001	1.000 EA
000692000FP	NP, WARNING LIFT INSTRUCTIONS	1.000 EA
000692000VD	LABEL WARNING	1.000 EA
418057747A	METAL FASTENER	8.000 EA
000613007QF	NP,RPM AC - XE WITH CERTIFIED LOGO	1.000 EA
000613006ABP	RPM-XE,EXTREME EFFICIENCY,UL LISTED	1.000 EA
000692000VY	PERMANENT MAGNET MOTOR NAMEPLATE	1.000 EA
422927001	C/D LABEL	1.000 EA
004824007AB	PAINT,XT	0.100 EA
810104004AAC	BRKT,ODE,LSPM280 (FL280)	1.000 EA
810104003AAA	BRKT,DE,LSPM280 (FL280)	1.000 EA
HA4054	SHORT T-DRAIN FITTING, .125" N.P.T.	1.000 EA
HA4054	SHORT T-DRAIN FITTING, .125" N.P.T.	1.000 EA
004824015A	GREASE POLYREX EM	0.300 LB
036600014AB	FLTW MOTOR MTG.	2.000 EA
048977006C	GRFTG - XP	1.000 EA
415045002F	SLINGER	1.000 EA
415045002P	SLINGER	1.000 EA
400638001G	WAVEN (Customer number 43699)	1.000 EA
418150003A	GREASE FITTING CAP	2.000 EA
035000001A	ALFTG 1/8" 1610-BL	1.000 EA
035000001BA	ALFTG 1/8" 1688-B-use 1B (bs)	1.000 EA
036100070KA	METRIC HSHCS	3.000 EA

Parts List (continued)		
Part Number	Description	Quantity
036100070JA	SHS M8 70MM UNPLATED	3.000 EA
036140001D	EYEBOLT - 360	2.000 EA
034693001AB	PPLG - G508- use 034692001AB	1.000 EA
034693001AB	PPLG - G508- use 034692001AB	1.000 EA
036500011AB	METRIC NUT M12-1.75 PLT.	4.000 EA
036500011AB	METRIC NUT M12-1.75 PLT.	4.000 EA
609830005ADD	TBOLT METRIC	4.000 EA
415000103E	T/LUG #4AWG-1/0AWG W/HOLE FOR .375 BOLT	1.000 EA
415072001B	CLAMP	1.000 EA
417733004AA	GASKET	2.000 EA
034180014FA	KEY 3/8X3/8X1-3/4L	1.000 EA
078548001T	FAN 250	1.000 EA
708535505A	FAN COVER HL360	1.000 EA
036000016KB	HHCSM10-1.5X16MM PLTD-280	4.000 EA
036000016KB	HHCSM10-1.5X16MM PLTD-280	2.000 EA
418018074A	GROUND LABEL G100 METRIC 160 D.C.	3.000 EA
033512008LB	HHTTS 1/4-20X1 PLATED	4.000 EA
406673002AE	2" CAP PLUG	1.000 EA
036620010AB	M10 EXT. TOOTH LK WASHER	2.000 EA
036620009AB	M8 EXTERNAL LK WASHER	1.000 EA
034630001AJ	1/8" PIPE COUPLING	1.000 EA
418014004A	609185004cDPT/BOX	1.000 EA
034530016AB	P/NIP 1/8X2 PLATED - 320	1.000 EA
076708000BB	CONDUIT BOX-360	1.000 EA

Product Information Packet: XEFRPM36604 - 60HP,1800,460V,HL364T,TEFC,F1

076709000A	C/B Cover - 360	1.000 EA
067053000B	GASK 320-400	1.000 EA
036000065JB	HHCS M8 1.25 ZINCPLAT	4.000 EA
034180037HA	KEY 5/8 SQ X 4-5/8IN	1.000 EA
004824007K	SPECIAL PAINT	0.100 EA

S. O.	FRAME	HP	TYPE	PHASE	HERTZ	RPM
--	HL364T	60	PSM	3	60	1800
VOLTS	AMPS	DUTY	AMB°C	INSUL	S. F.	NEMA DESIGN
460	59.0	CONT	40	H	1.15	B
CODE LETTER	ENCL	ROTOR INERTIA (lb-ft <sup>2</sup> )		STATOR RES. @ 25°C OHMS (BETWEEN LINES)		
G	TEFC	7.56		.1169		TYPICAL DATA

PERFORMANCE


LOAD	HP	AMPERES	RPM	POWER FACTOR %	EFFICIENCY %
NO LOAD	0	25.1	1800	3.70	N/A
1/4	15.0	20.0	1800	74.7	93.7
2/4	30.0	30.6	1800	95.9	96.0
3/4	45.0	44.4	1800	98.4	96.5
4/4	60.0	59.0	1800	98.6	96.6
5/4	75.0	74.1	1800	98.2	96.4

SPEED TORQUE

	RPM	TORQUE (% FULL LOAD)	TORQUE (lb-ft)	AMPERES
LOCKED ROTOR	0	159	278.5	439.8
PULL OUT	1800	247	432.6	187.8
FULL LOAD	1800	100	175.2	59.0

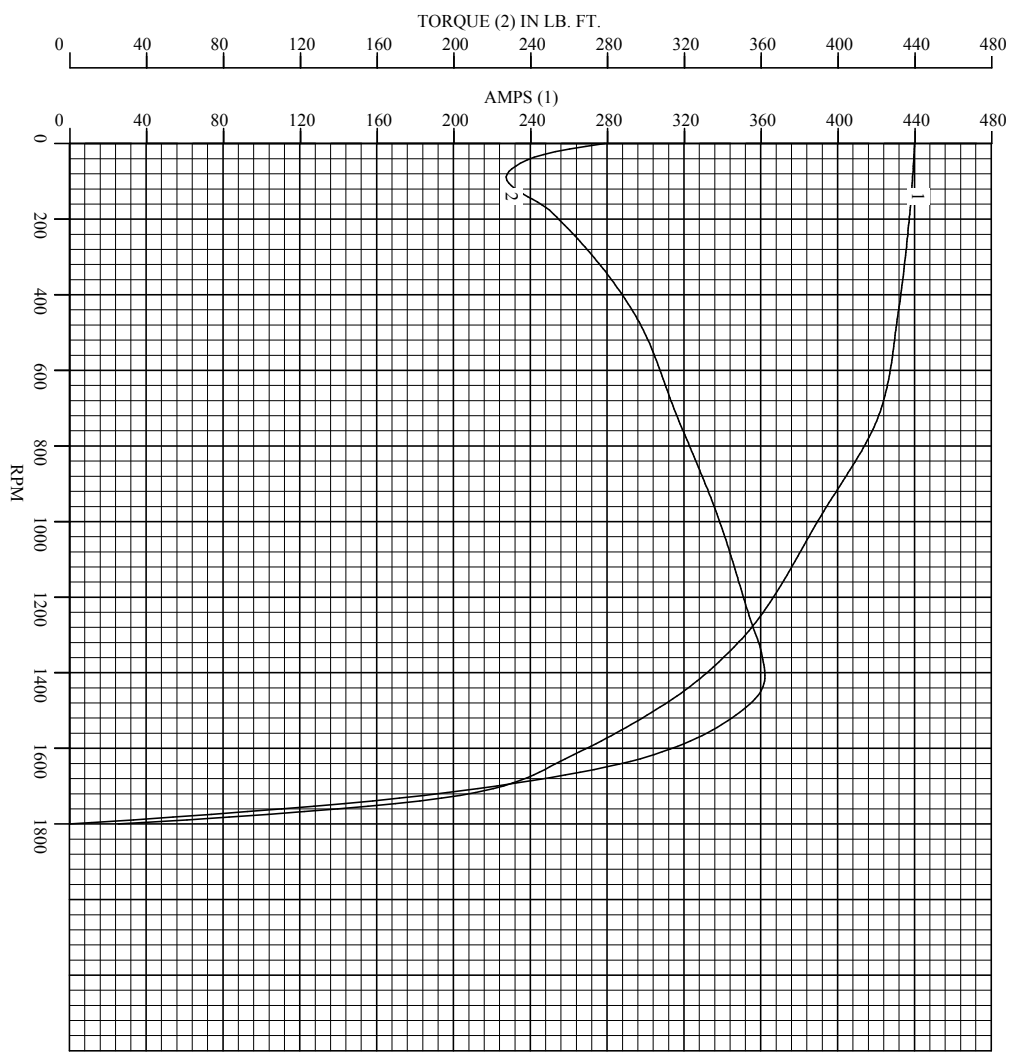
THIS IS A PERMANENT MAGNET MOTOR  
 GENERATED OPEN CIRCUIT LINE-LINE VOLTAGE at 25°C = 21.1 VOLTS PER 100 RPM

REMARKS:

 A MEMBER OF THE ABB GROUP	DR. BY CAD	LSPM MOTOR
	CK. BY RBM APP. BY RBM DATE 05/25/2016	PERFORMANCE DATA IS7022A ISSUE DATE 05/25/2016

S. O.	--	HERTZ	60	AMB°C	40	CODE LETTER	G
FRAME	HL364T	RPM	1800	INSUL.	H	WR <sup>2</sup> (lb-ft <sup>2</sup> )	7.56
HP	60	VOLTS	460	S.F.	1.15	NEMA DESIGN	B
TYPE	PSM	AMPS	59.0	ENCL.	TEFC	STATOR RES. @ 25°C	.1169
PHASE	3	DUTY	CONT			OHMS (BETWEEN LINES)	

**Amps & Torque vs. RPM  
During Acceleration**



Typical Data

**BALDOR**  
A MEMBER OF THE ABB GROUP

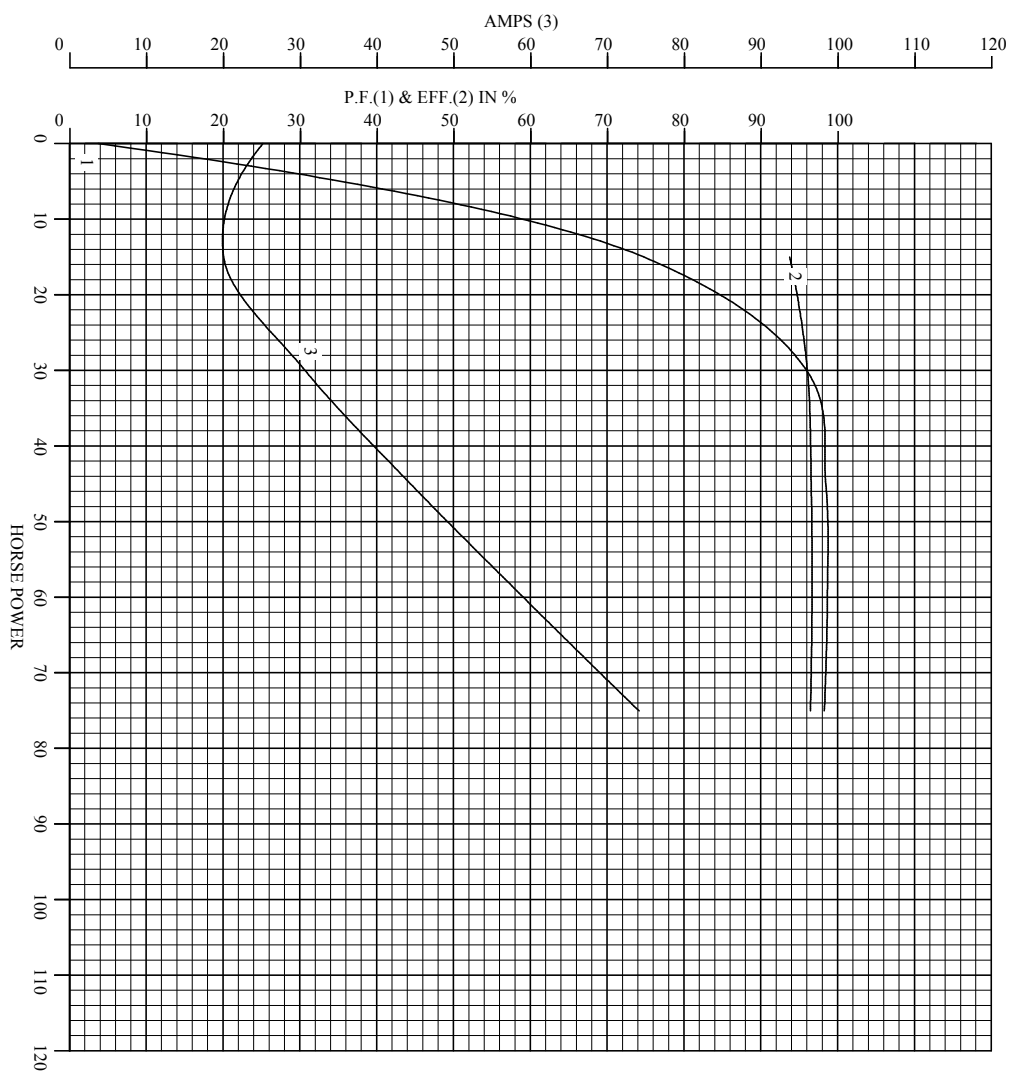
DR. BY	CAD
CR. BY	RHM
APP. BY	RHM
DATE	05/25/2016

**ISPM MOTOR  
PERFORMANCE  
CURVES**

ISSUE DATE: **L57022A**  
05/25/2016

S. O.	--	HERTZ	60	AMB°C	40	CODE LETTER	G
FRAME	HL364T	RPM	1800	INSUL	H	WR <sup>2</sup> (1b-ft <sup>2</sup> )	7.56
HP	60	VOLTS	460	S.F.	1.15	NEMA DESIGN	B
TYPE	PSM	AMPS	59.0	ENCL	TEFC	STATOR RES. @ 25°C	.1169
PHASE	3	DUTY	CONT			OHMS (BETWEEN LINES)	

Performance Data vs. HP  
At Synchronous Speed

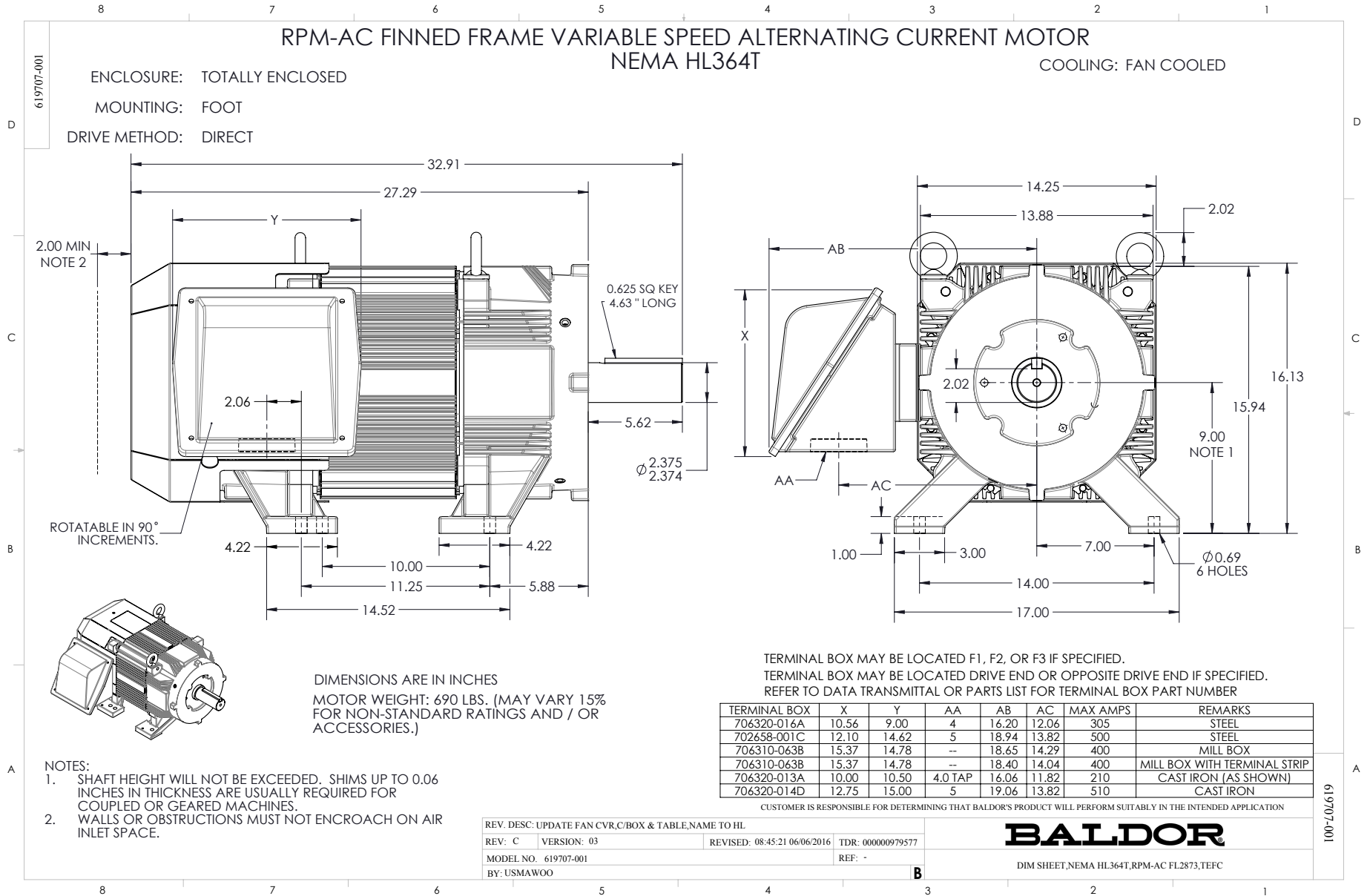


TYPICAL DATA

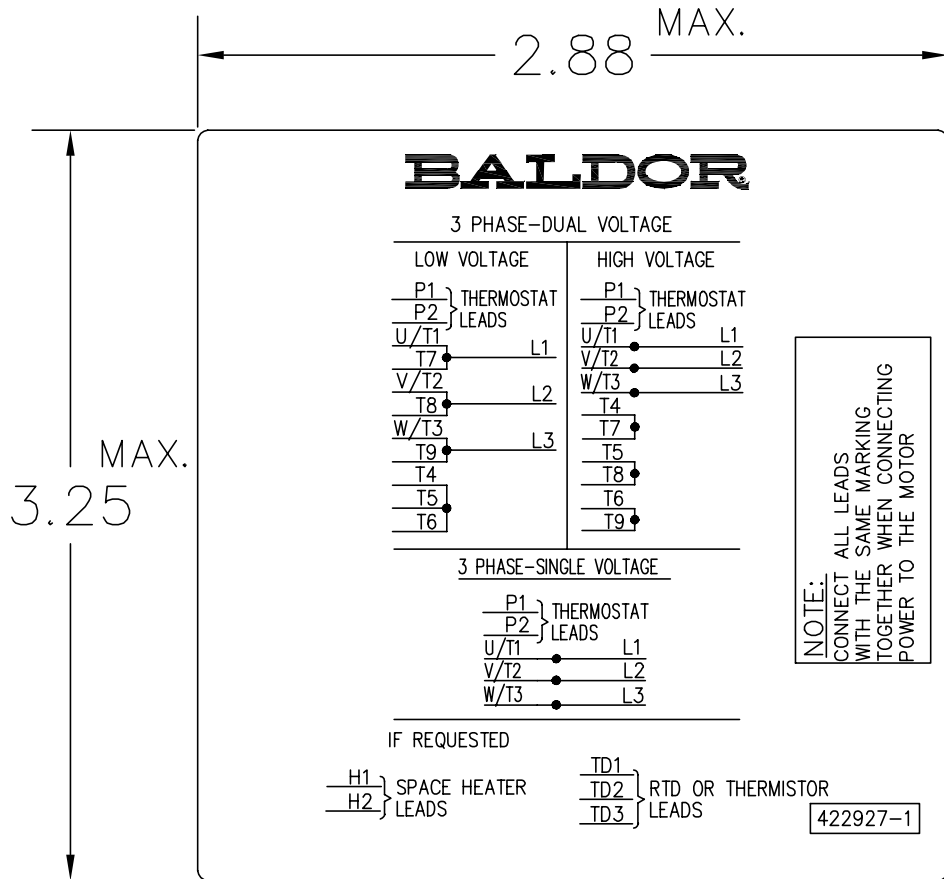
**BALDOR**  
A MEMBER OF THE ABB GROUP

DR. BY	CAD	
CR. BY	RHM	
APP. BY	RHM	
DATE	05/25/2016	

**ISPM MOTOR PERFORMANCE CURVES**      ISSUE DATE      L57022A      05/25/2016



422927-001



NOTE:  
DATA TO BE SIZED  
SO THAT IT FITS INTO  
MATERIAL DECAL  
DIMENSIONS. MAKE  
LETTERS & NUMBERS  
AS LARGE AS POSSIBLE.

MATERIAL: CERAMATIC DGF-P4  
PERMA GRIP ADHESIVE

ALL LETTERS, NUMBERS  
AND LINES TO BE BLACK  
ON WHITE BACKGROUND.

422927-001

REV. DESC: CHANGE BACKGROUND COLOR FROM GOLD TO WHITE		
REV. LTR: B	VERSION: 02	TDR: 000000788708
FILE: \RGG\00000\203	REVISED: 08:09:29 03/04/2013	
MTL: -	BY: RGGWT	

**BALDOR**

EXTERNAL CONNECTION LABEL

SH 1 of 1

Marketing maintained PDF of MN442:

<http://www.baldor.com/mvc/DownloadCenter/Files/mn442>